

Worrell

5828 Tamarisk Way, San Luis Obispo, CA 93401

Jill Bleher, Landscape Designer
Rainscape, a Landscape Service Company
P.O. Box 4132 San Luis Obispo, CA 93403
jill@rainscapeslo.com

Design Goals



1. Reduce water usage.

Replace lawn with perennial planting beds.
Specify a drought tolerant plant palette.

2. Update and improve curb appeal.

Select plants to match existing style and colors of the home, trees, and shrubs, while also refreshing the overall appearance.

3. Maintain year-round interest.

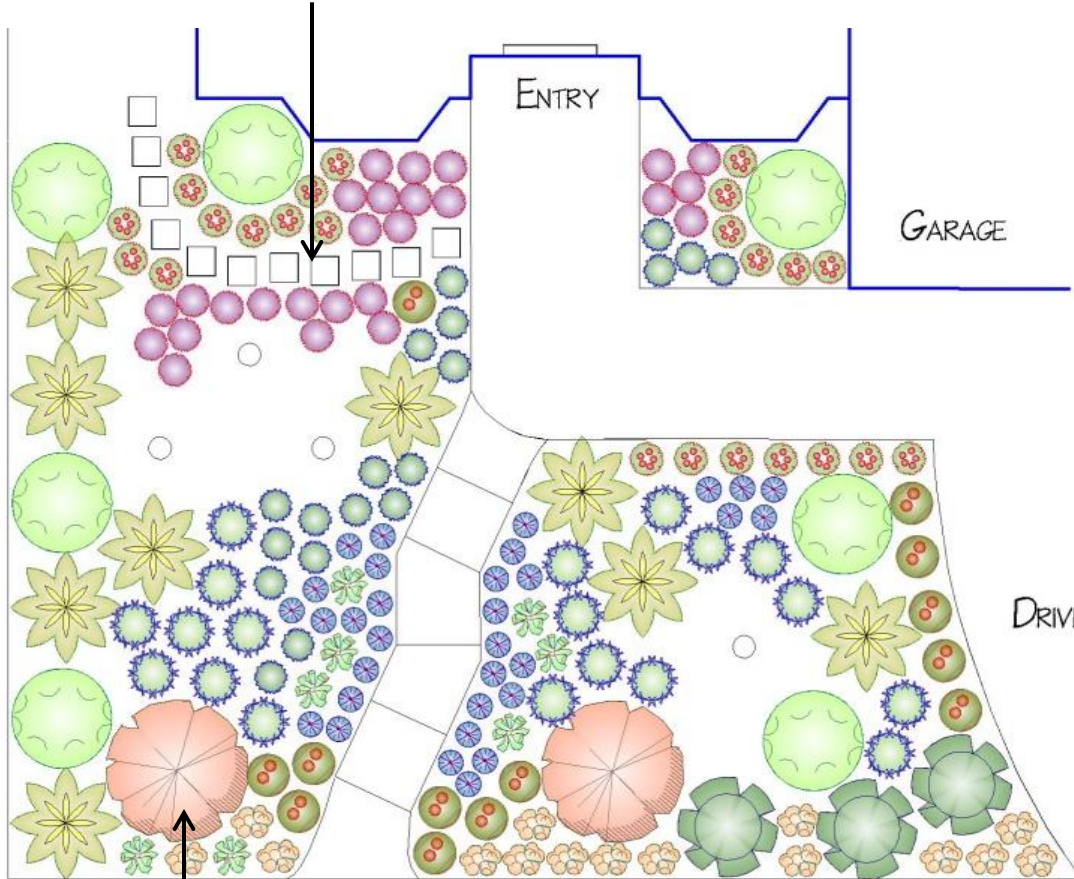
Select evergreen plants with color and interest in the leaves throughout the year. Include perennials which bloom across varied seasons.












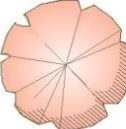


Succulents, grasses, and flowering plants complement and contrast.

Planting Plan Version 1

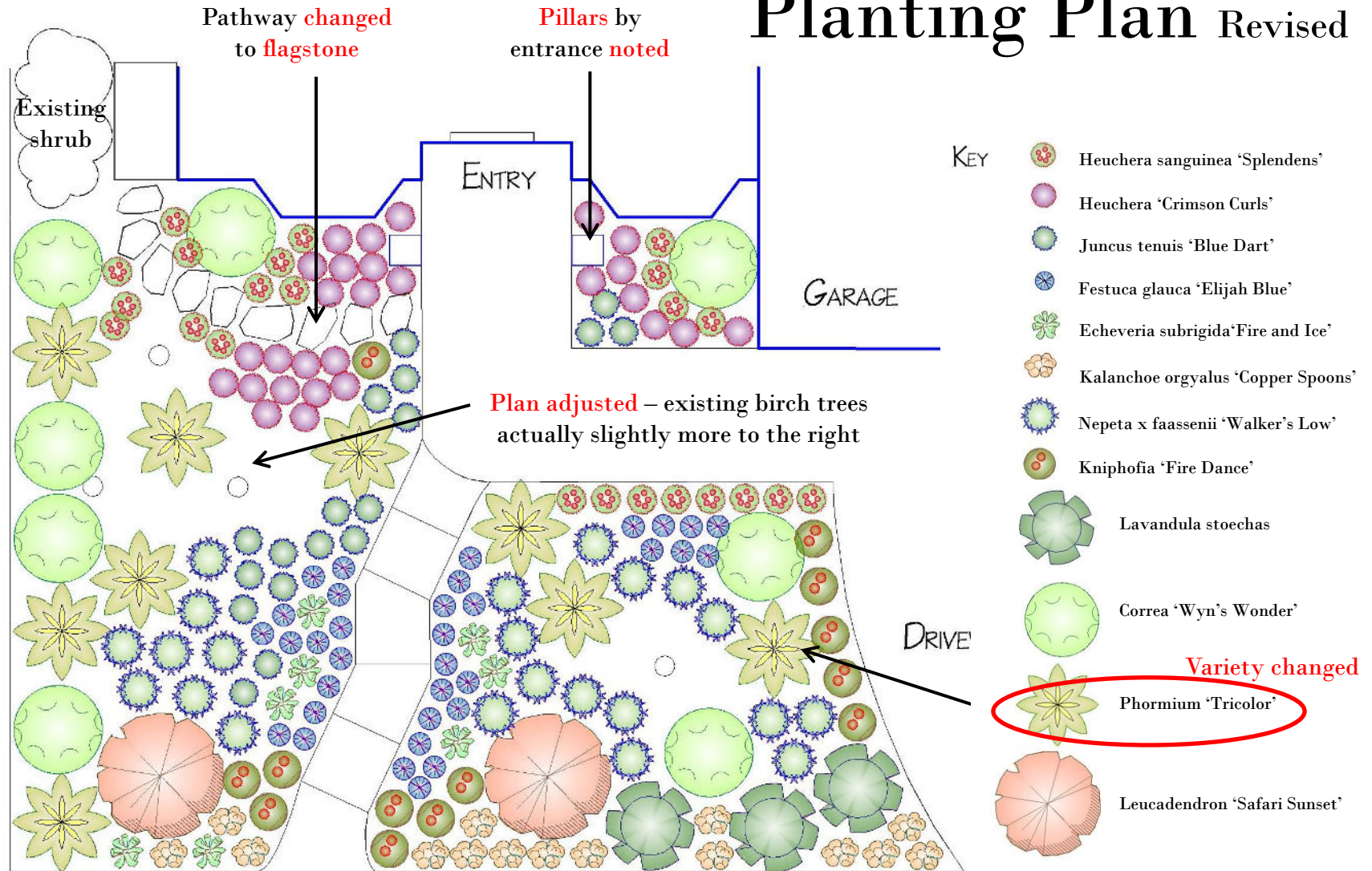
A new stepping stone pathway passes beside shade-loving and colorful Heucheras.



- KEY
-  Heuchera sanguinea 'Splendens'
 -  Heuchera 'Crimson Curls'
 -  Juncus tenuis 'Blue Dart'
 -  Festuca glauca 'Elijah Blue'
 -  Echeveria subrigida 'Fire and Ice'
 -  Kalanchoe orgybalus 'Copper Spoons'
 -  Nepeta x faassenii 'Walker's Low'
 -  Kniphofia 'Fire Dance'
 -  Lavandula stoechas
 -  Correa 'Wyn's Wonder'
 -  Phormium 'Maori Queen'
 -  Leucadendron 'Safari Sunset'

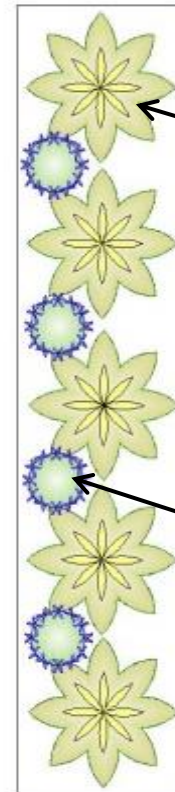
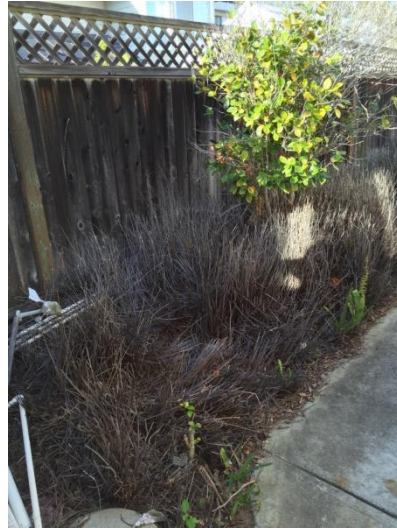
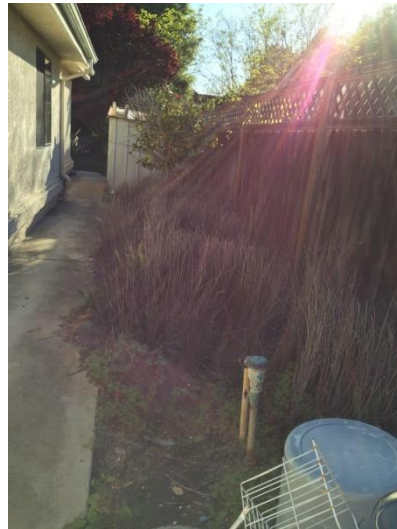
Leucadendron flank on either side of the front steps, helping to define the area.

Planting Plan Revised



Side Yard Plan Option 3

Phormium grasses provide structure and leafy-green tones, while Nepeta softens the edge and adds lighter tones of blue-lavender and green.



Phormium 'Tricolor'



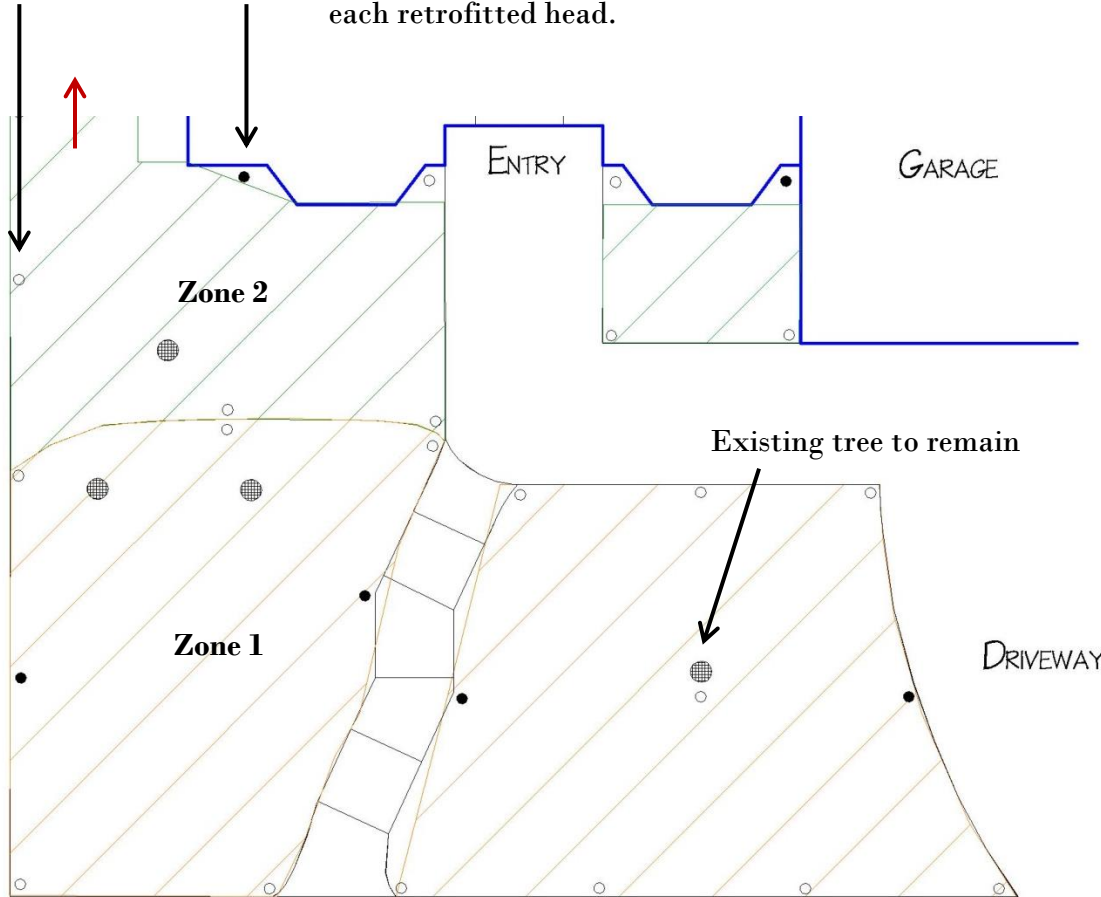
Nepeta x faassenii 'Walker's Low'

Irrigation Plan Zones 1, 2, 5

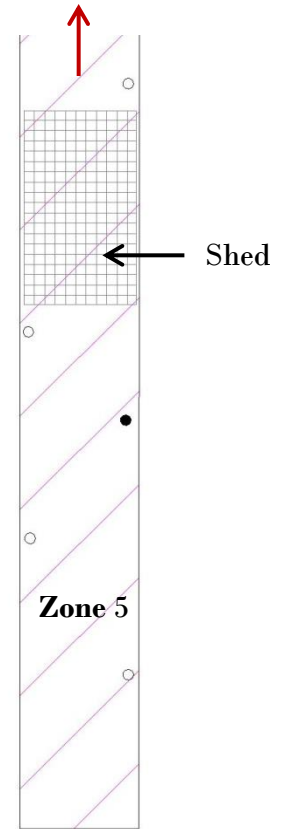
Irrigation spray head to be capped off.

Irrigation spray head to be retrofitted (see next page) for adaption to drip irrigation. Drip line will be run from each retrofitted head.

A few spray heads in zones 2 and 5 will remain as they are (general location notated by the red arrow).



Front Yard: Zones 1 and 2



Right Side Yard: Zone 5

Irrigation Details Key Parts



17MM EZ-ID Check Valve Dripline with
.6 GPH emitters and 18" spacing



Retro Drip Adapter



Universal Sprinkler Shut-Off Cap

These plants have been selected for their tolerance of shade and/or sun, low-water needs, color and year-round interest.

Plant Palette page 1



Heuchera sanguinea 'Splendens'



Kniphofia 'Fire Dance'



Heuchera 'Crimson Curls'



Nepeta x faassenii 'Walker's Low'



Juncus tenuis 'Blue Dart'



Festuca glauca 'Elijah Blue'

Plant Palette page 2



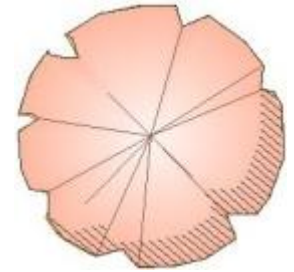
Echeveria subrigida 'Fire and Ice'



Correa 'Wyn's Wonder'



Kalanchoe orgyalus 'Copper Spoons'



Leucadendron 'Safari Sunset'



Lavandula stoechas



Phormium 'Tricolor' – New Zealand Flax

Materials Palette



Selected pathway style – flagstone steps



Bark Chip options: Midnight Black, Mini Fir, Recycled Brown



Flagstone options – Arizona Buff, Arizona Moss, Cherokee Tuscan